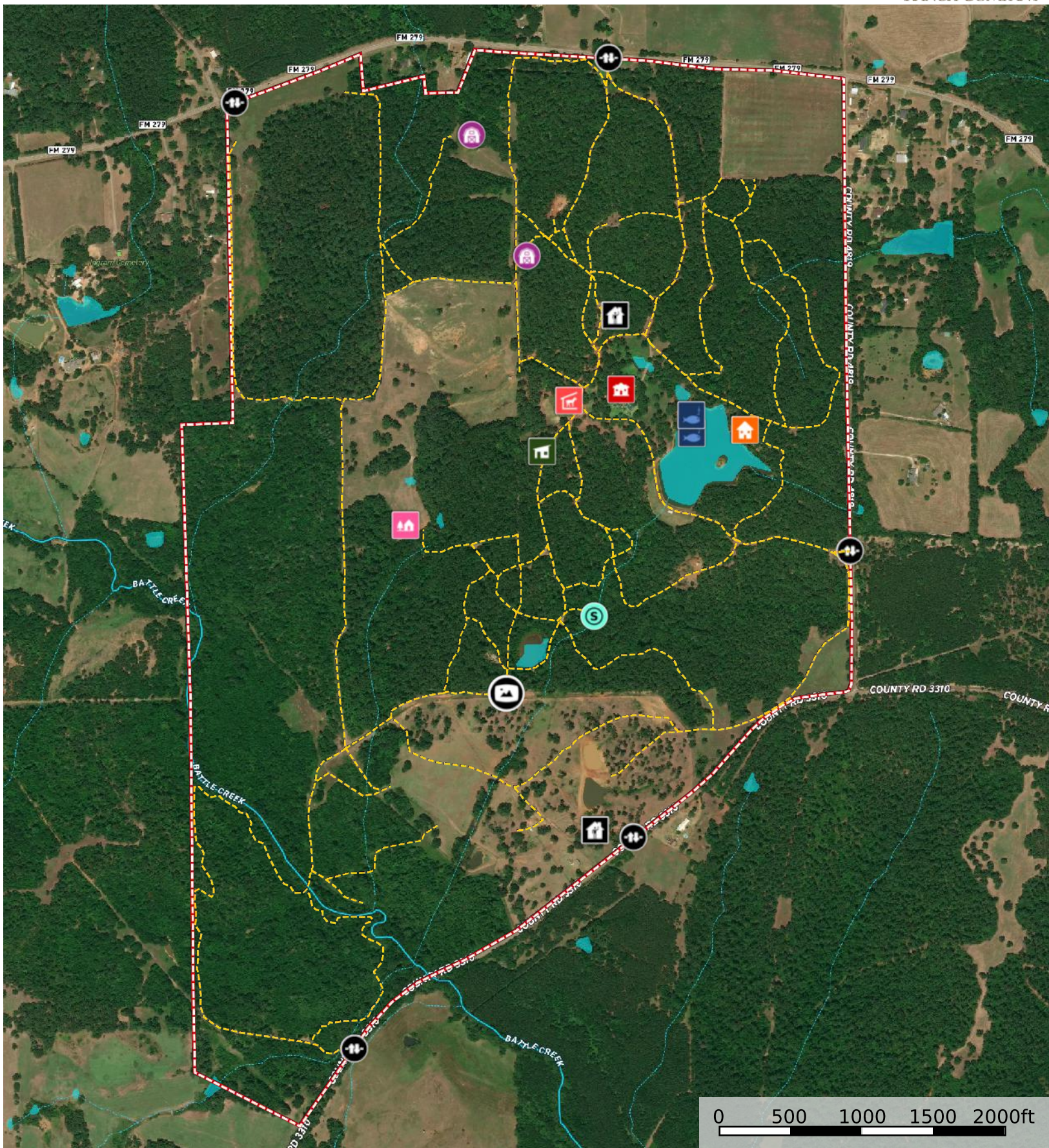


Van Zandt County - Hickory Wind Farm

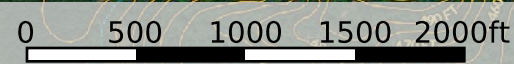
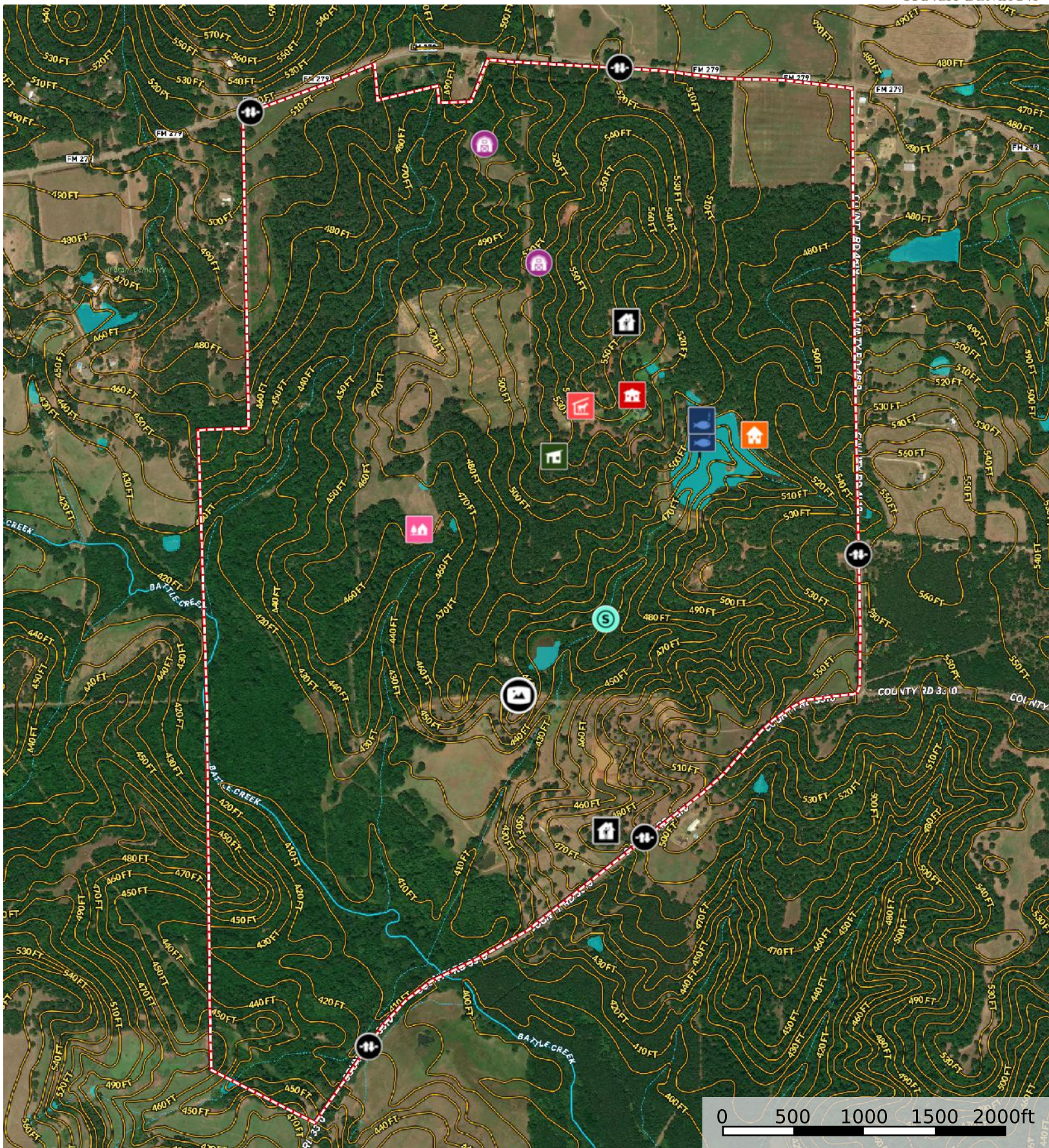
Van Zandt County, Henderson County, Texas, 608 AC +/-


















- | | | | | | | | | | |
|------------|----------------|--------------|----------|----------------------|-------------|------------|-------------|-----------------|------------|
| Tree House | Panoramic View | Boat Dock | Pier | Shed / Shack | Cottage | Barn | Horse Stall | Foreman's House | Main House |
| Spring | Gate | Road / Trail | Boundary | Stream, Intermittent | River/Creek | Water Body | | | |

Van Zandt County - Hickory Wind Farm

Van Zandt County, Henderson County, Texas, 608 AC +/-



- | | | | | | | | | | |
|--|--|---|--|--|--|---|---|---|--|
|  Tree House |  Panoramic View |  Boat Dock |  Pier |  Shed / Shack |  Cottage |  Barn |  Horse Stall |  Foreman's House |  Main House |
|  Spring |  Gate |  Boundary |  Stream, Intermittent |  River/Creek |  Water Body | | | | |